

Corobrik Transvaal's Silver Grey Travertine from Drietfontein



MOSQUE JOHANNESBURG



COROBRIK®

Surround yourself with the strength of Corobrik



N.P.I.A

JOURNAL OF THE NATAL PROVINCIAL INSTITUTE OF ARCHITECTS
TYDSKRIF VAN DIE NATALSE PROVINSIALE INSTITUUT VAN ARGITEKTE
ISSUE 1/1990 • VOLUME 15 • ISSN 0379-9301 • UITGAWE 1/1990 • JAARGANG 15



AWARDS
AND
SUBMISSIONS

AWARDS OF MERIT PRESENTATION CEREMONY HELD IN THE OPERA FOYER OF THE NATAL PLAYHOUSE, DURBAN, ON FRIDAY, 24 SEPTEMBER 1989



John Frost, Linda and Brian Johnson, and Ivor Daniel. Brian Johnson was inducted as NPJA President on that evening.



Vidian and Keith Nurcombe, Maurice Dibb and Errol Rutherford.



During the same ceremony, the ISAA Architectural Writers and Critics Award was presented to Walter Peters by the ISAA President-in-Chief, William Ritchie.

GOOD DESIGN PERVADES

A brief review of the 1989 ISAA Natal Awards of Merit

The seventh ISAA Natal Awards of Merit were for buildings completed between January 1987 and December 1988. For an architect, the Award is a special accolade, for it is made by fellow professionals. It is important however, to note that it is not a case of the profession patting itself on the back.

The assessors reported that "almost without exception, clients or users of the projects visited expressed considerable satisfaction with their buildings and the professional services they had received from the architects concerned". The lesson is that good design is appreciated by the layman as well as the professional.

The premiated submissions speak of a marked sensitivity towards the natural and historical environments and the need for good architecture to recognise the past and harmonise with it.

In a setting not unlike the Greek island of Santorini, the decision by Campbell, Bernstein & Irving to use the vocabulary and materials of the namesake was the right one. In the 295 Pietermaritzburg Street office building, Carter-Brown and Baillon have successfully distilled the essence of historic Pietermaritzburg and created a building that fits carefully into the existing townscape without resorting to pastiche.

In the offices and studios of Stauch Vorster I find the conjunction of the

contemporary offices and the historic villa to be brilliant — the building is a delight.

By way of contrast, the BIP office block by Johnson Murray Architects is free-standing and unashamedly modern and comes from a stable that has produced an impressive list of honours over a short period of time.

Recognising the special skills required in conservation projects, Conservation Awards have been established.

Quadrant House by Hallen, Theron & Partners epitomises the principles of creative conservation: repaired where repairable, what is new, palpably new.

That the Church Street mosque by Ismail Cassimjee received special mention is most gratifying, for its restoration is an absolute labour of love.

The panel of assessors included Gordon Small, *eminence grise* of the NPJA; Professors Errol Haarhoff and Danie Theron, Heads of the Schools of Architecture at the Universities of Natal and Port Elizabeth respectively; and a non-architect, Michael Green, Editor-in-Chief of *The Daily News* and *Sunday Tribune*.

For the record, 18 submissions were entered, all of which are presented in this issue. □

Walter Peters

EDITORIAL BOARD

BRIAN JOHNSON (Chairman)
SYDNEY BAILLON, MAURICE DIBB, FRANK EMMETT, JOHN FROST, PETER McCAFFERY, ANDREW OGILVIE

PRODUCTION EDITOR

PROF DR WALTER PETERS

EDITORIAL ASSISTANT

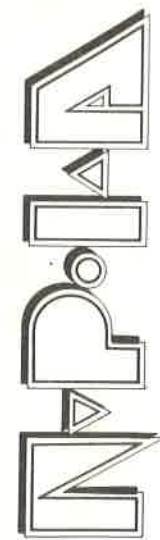
JESSIE BIRSS

DESIGN

RICK ANDREW

COVER

QUADRANT HOUSE
SANTORINI (Phase 1)
SOORTISUNNI MOSQUE



PUBLISHED BY the Natal Provincial Institute of Architects
PO Box 777 Durban 4000 Tel: (031) 3061028
UITGEVER DEUR die Natalise Provinsiale Instituut van Argitekte
Posbus 777 Durban 4000 Tel: (031) 3061028

1989 AWARDS OF MERIT AND SUBMISSIONS

AWARD

Santorini (Phase 1)

Thompson's Bay, Chaka's Rock, North Coast.
Architects: Campbell, Bernstein & Irving, Durban.

Citation:

The visual beauty of the traditional architecture of Greek islands has long inspired architects, but sadly the results are all too often poor copies of the real thing. Phase 1 of this project is commended for the way in which the architecture on the one hand captures the spirit of the Greek reference, but at the same time responds to its unique context on a Natal coastal dune. Special mention is made of the inventiveness in detailing, the use of colour, the quality of the external spaces, the ecologically sensitive planning and concern with landscaping.

• This project was featured in *Architect & Builder*, May 1988.



Brian Johnson, Thurston Raats and Malcolm Felling.



AWARD

Stowell Building

295 Pietermaritzburg Street, Pietermaritzburg.
Architects: Carter-Brown & Baillon, Pietermaritzburg.

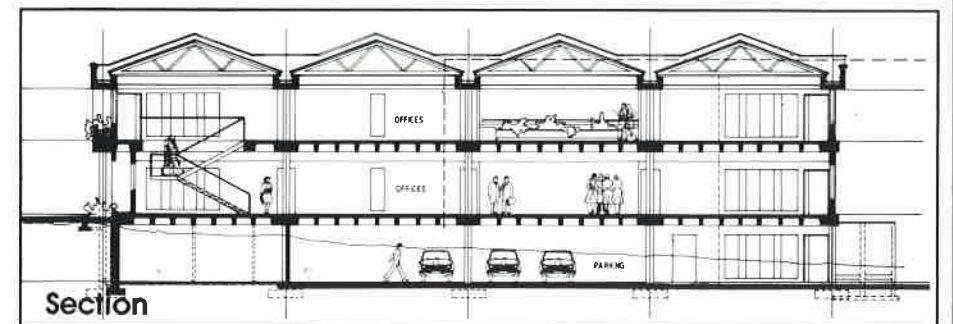
Citation:

The City of Pietermaritzburg possesses a unique historic townscape character in which both the scale of buildings and the use of materials (especially the red "Pietermaritzburg" brick) are important. Regrettably, many newer developments in the city tend to ignore these special townscape qualities. It is precisely with these concerns in mind that this project is commended for an Award of Merit. Although a new building, it contributes to the unique townscape character of the city, because of the careful consideration of scale, of context, of articulation and detailing, and above all the use of red brick.

• This project was featured in *Planning 98*, September 1988.

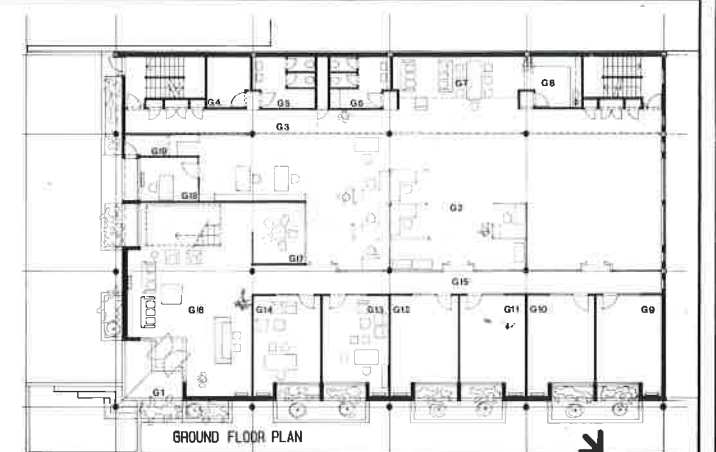


Jean and Geoffrey Carter-Brown, Eddie and Heidi Röhrs.



Ground Floor

- G.1 ENTRANCE
- G.2 OPEN PLAN SECRETARIAL STATIONS
- G.4 PABX and CPU
- G.5 GENTS' TOILETS
- G.6 LADIES' TOILETS
- G.7 STAFF RECREATION
- G.8 KITCHENETTE
- G.9-G.13 PARTNERS' OFFICES
- G.14 VISITING ATTORNEYS' OFFICES
- G.16 RECEPTION
- G.17 INTERVIEW
- G.18 COLLECTION OFFICER
- G.19 COLLECTIONS



AWARD

Architects' Studio and Offices

59 Musgrave Road, Durban.

Architects: Stauch Vorster, Durban.

Citation:

The preservation of our architectural heritage, especially buildings of historic significance, is a laudable aim, often the victim of harsh economic realities. It is for this reason that any new development that is able to both respond to new uses and requirements and at the same time preserve important historic buildings, is a commendable achievement. Not only has this aim been achieved in this project, but a building of considerable historic and architectural merit has been restored and added to in a way that does not detract from the special qualities of the original building.

• This project was featured in NPJA Journal, 2-1988.



Brian Johnson, Ivor Daniel and Derrik Garvie.



AWARD

British Industrial Plastics factory office block

Gillitts Road, Pinetown.

Architects: Johnson Murray Architects, Durban.

Citation:

Industrial areas are hostile environments that often provide a setting for buildings designed only to meet functional requirements.

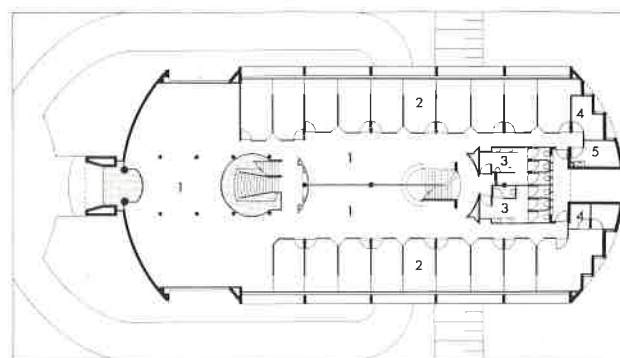
Industrial buildings, however, are candidates for quality design no less than any other type of building. Although not unique in this regard, this project is commended for the successful way in which the architecture has been used to establish a corporate image for the client, for the quality of the interior spaces, the concern with detailing, and the use of colour.



Brian Johnson, Andrew Murray and Murdoch Beaton.

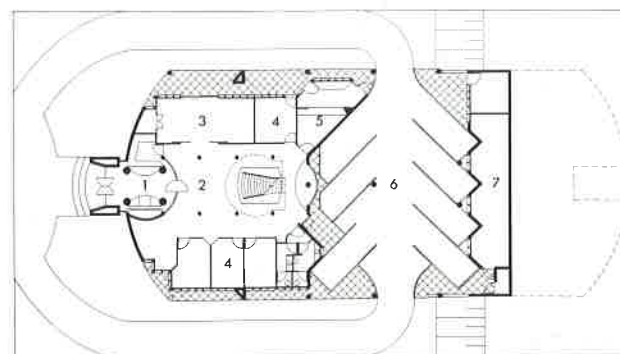
Intermediate Level

1. OPEN PLAN OFFICES
2. OFFICES
3. TOILETS
4. STORE ROOM
5. REST ROOM



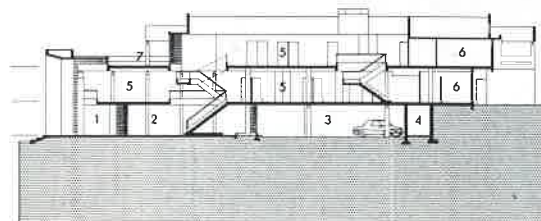
Entrance Level

1. RECEPTION
2. LOBBY
3. TRAINING ROOM
4. INTERVIEW ROOMS
5. PAYOUT
6. COVERED PARKING
7. STORE ROOM



Logitudinal Section

1. RECEPTION
2. LOBBY
3. COVERED PARKING
4. STORE ROOM
5. OPEN OFFICES
6. TOILETS
7. TERRACE



CONSERVATION AWARD

Quadrant House

Victoria Embankment, Durban.

Architects: Hallen Theron & Partners Inc, Durban.

Citation:

The Conservation Award is to encourage and recognize outstanding achievements in the field of restoration, conservation and the rehabilitation of buildings of historic importance. When done well, they may also serve as exemplars to the wider public of how important old buildings can be conserved and re-used without unnecessary destruction. This project is commended for the sensitive restoration of a street facade that uniquely contributes to the townscape quality of the Victoria Embankment, and for the careful way in which the interior has been converted from residential to office use. Despite the difficulties inherent in the design and contract management of such an enterprise, and the fact that the brief called for a change of use, the interior retains much of the quality and ambience of the original building.

• This project was featured in Architect & Builder, August 1989.



Brian Johnson, Patricia Emmett and Murray Grindrod.



SPECIAL MENTION

Soorti Sunni Mosque

Upper Church Street, Pietermaritzburg.

Architect: Ismail Cassimjee, Pietermaritzburg.

Citation:

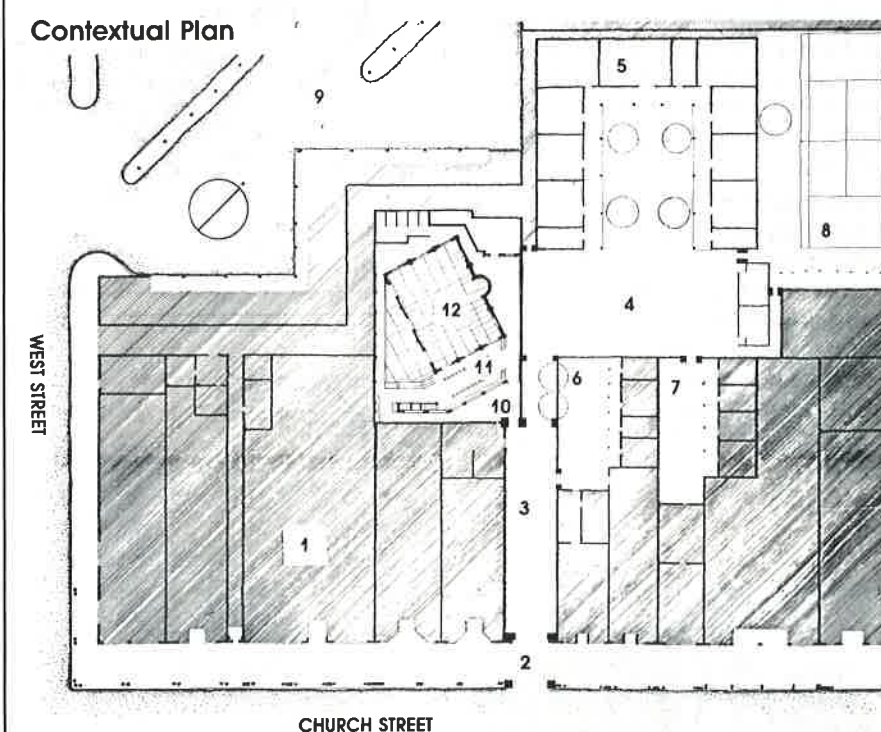
Successful conservation in the face of harsh economic realities is often a loser. In South Africa it has also been a loser in the face of past practices that have relocated whole communities of people as a result of the Group Areas Act. It was of particular interest to thus discover in the case of this project, that despite this double disadvantage, a religious building of historic significance had been restored for the use of a previously disrupted community. In order to give acknowledgement to this project, it is recommended for Special Mention.

• A brief entry can be found in NPJA Journal, 1-1988.



Baboo Dhoda, Brian Johnson and Ismail Cassimjee.

Contextual Plan



- | | | |
|---------------------------------------|---------------------|---------------------|
| 1 SHOPS WITH LIVING ABOVE | 5 SCHOOL | 9 NEW BUS TERMINUS |
| 2 ENTRANCE PORCH TO PUBLIC FACILITIES | 6 HOUSING COURTYARD | 10 MOSQUE COURTYARD |
| 3 ENTRANCE COURTYARD | 7 HOUSING COURTYARD | 11 ABLUTION AREA |
| 4 SCHOOL COURTYARD | 8 TENNIS COURTS | 12 MOSQUE |

SUBMISSION

Comrades Marathon House

Connaught Road, Pietermaritzburg.
Architect: Wynand Claassen, Durban.

The restoration of a Victorian villa and coach house, conversion to the headquarters of the Comrades Marathon Association with a museum and an administrative section, and the integration, across an amphitheatre, of a new development with functions hall and caretaker's flat.

● This project was featured in Architect & Builder, December 1987.



SUBMISSION

Vadek Paint and Decor Centre

Pine Street, Durban.
Architects: Stauch Vorster, Durban.

The circular perimeter acts as a visual focus to a major traffic route. Showroom, office and entertainment spaces are located on the corner and enjoy views towards the city.

● This project was featured in Architect & Builder, April 1989.



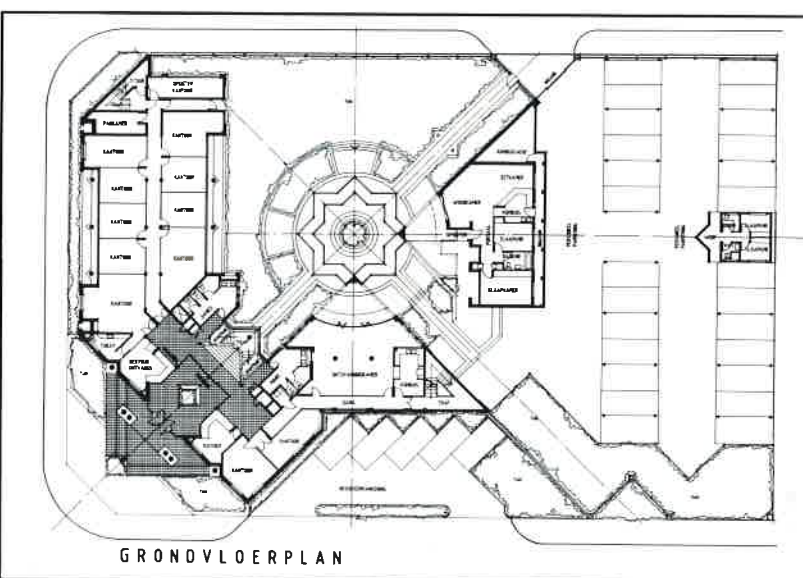
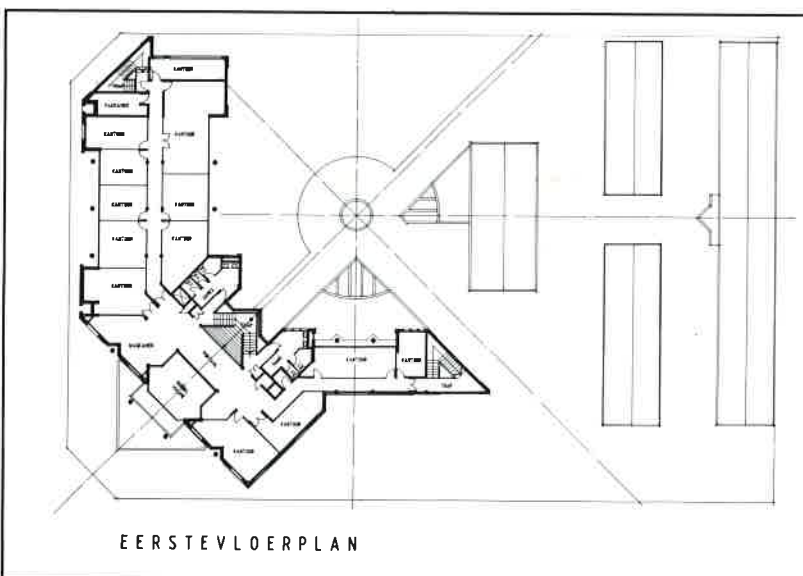
VOORLEGGING

Landbank Kantoorgebou

Hoek van Utrecht en President Strate, Vryheid.
Argitekte: Van der Merwe Verbeek, Pretoria.

In beginsel is die gebou ontwerp om by te dra tot die gevestigde patroon van Vryheid se vierkantige straatblokke; die aspek van hoekingange te beklemtoon; die klipkerk wat reeds dekades lank toesig hou oor die gemeenskap te respekteer as historiese landmerk; en te voldoen aan die kliënt se behoeftes vir 'n hoofkantoorcentrum vir Noord-Natal.

Die kantoorakkommodasie is aan die noordgrens geplaas; op die wesgrens draai die geboufunksies hul rug op die straat en leef uit na die plein op die sig-as na die kerk. Die opsigterswoonstel beklemtoon die visuele as tussen die ingangsportaal en kerktoegang deur sy afgeskuinsde vorm. Materiale, kleure en teksture vir die gebou word, soos die konsep, uit die omgewing voorgeskryf.



SUBMISSION

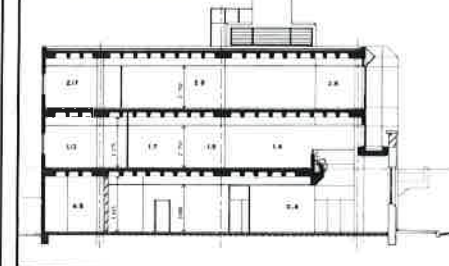
First National Bank

Corner Church and High Streets, Vryheid.
Architects: Carter-Brown & Baillon, Pietermaritzburg.

Whilst acknowledging the need for expansion, the mutually shared concern of client and architect to retain the historical corner building was respected by the skilful design of flush-glazed facades to two further storeys that surmount the original edifice yet do not crush it.



Cross Section

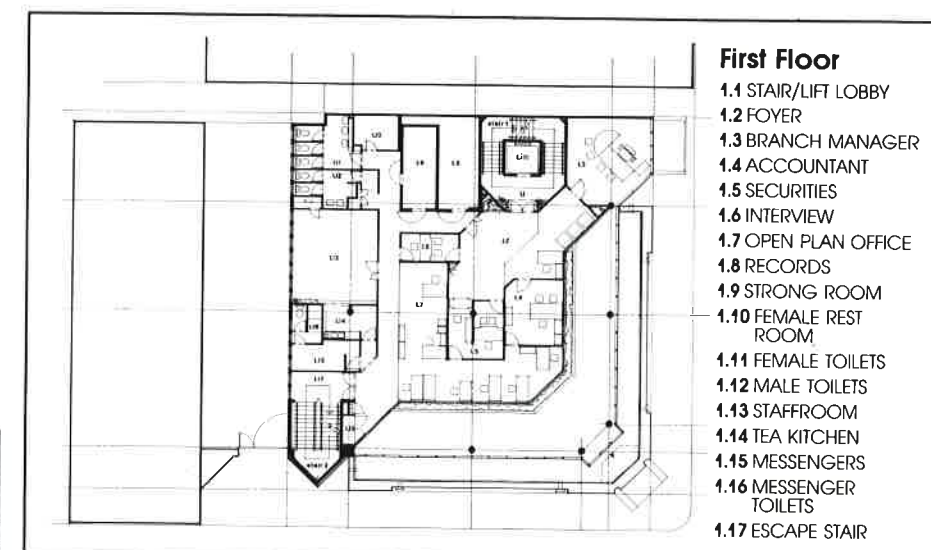


SUBMISSION

Office building

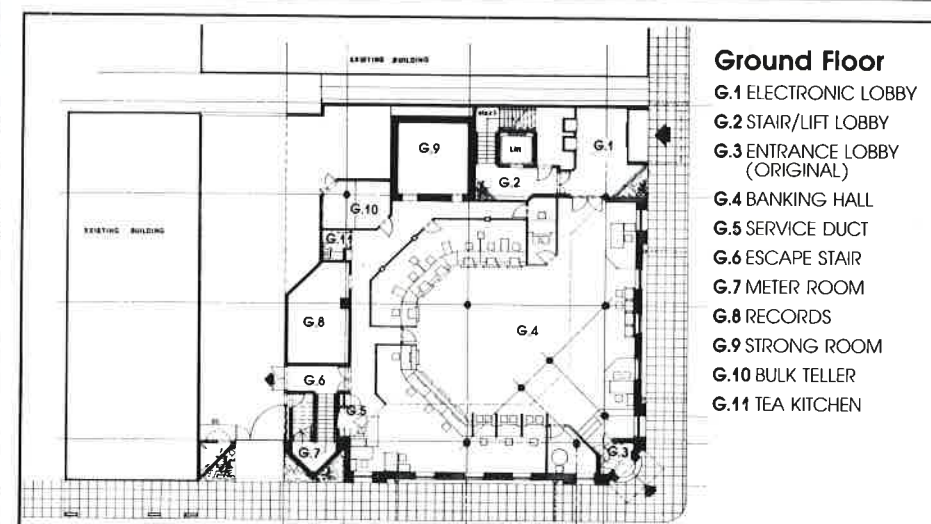
130 Field Street, Durban.
Architects: Seedat Architects, Durban.

The design of a low-cost building with a maximum lettable area has resulted in ground floor shopping accommodation and three floors of office space. The narrow street frontage prompted the architect to experiment with varying plans and colour tones.



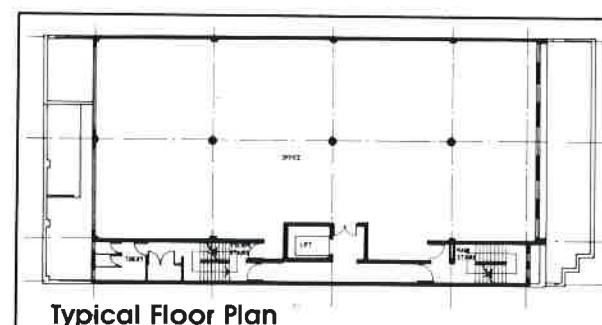
First Floor

- 1.1 STAIR/LIFT LOBBY
- 1.2 FOYER
- 1.3 BRANCH MANAGER
- 1.4 ACCOUNTANT
- 1.5 SECURITIES
- 1.6 INTERVIEW
- 1.7 OPEN PLAN OFFICE
- 1.8 RECORDS
- 1.9 STRONG ROOM
- 1.10 FEMALE REST ROOM
- 1.11 FEMALE TOILETS
- 1.12 MALE TOILETS
- 1.13 STAFFROOM
- 1.14 TEA KITCHEN
- 1.15 MESSENGERS
- 1.16 MESSENGER TOILETS
- 1.17 ESCAPE STAIR



Ground Floor

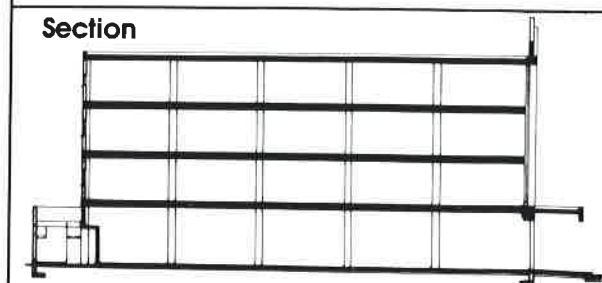
- G.1 ELECTRONIC LOBBY
- G.2 STAIR/LIFT LOBBY
- G.3 ENTRANCE LOBBY (ORIGINAL)
- G.4 BANKING HALL
- G.5 SERVICE DUCT
- G.6 ESCAPE STAIR
- G.7 METER ROOM
- G.8 RECORDS
- G.9 STRONG ROOM
- G.10 BULK TELLER
- G.11 TEA KITCHEN



Typical Floor Plan



Ground Floor Plan



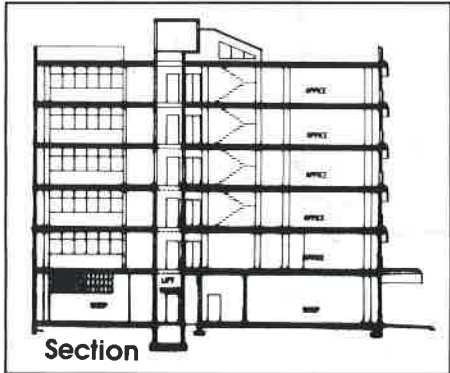
Section

SUBMISSION

Aniff Centre

Corner Victoria and Field Streets, Durban.
Architects: Seedat Architects, Durban.

To provide the client with a maximum of lettable space and a low-maintenance building the architects exploited the advantages of the corner site with colour-coated aluminium cladding and integrated sun control louvres.



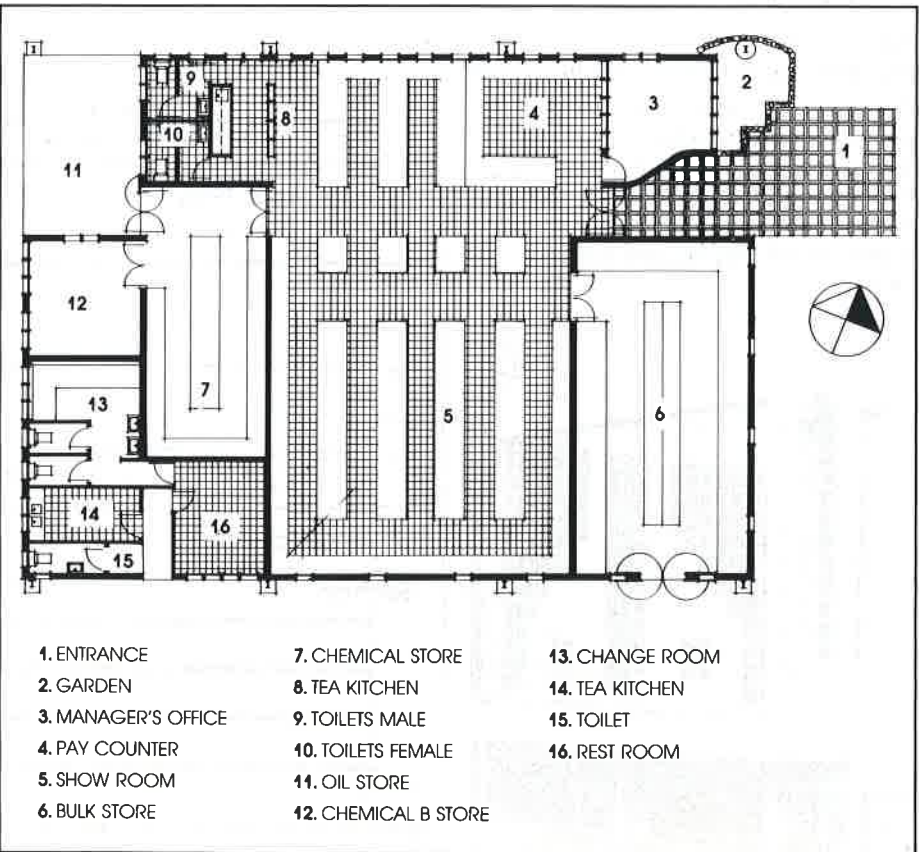
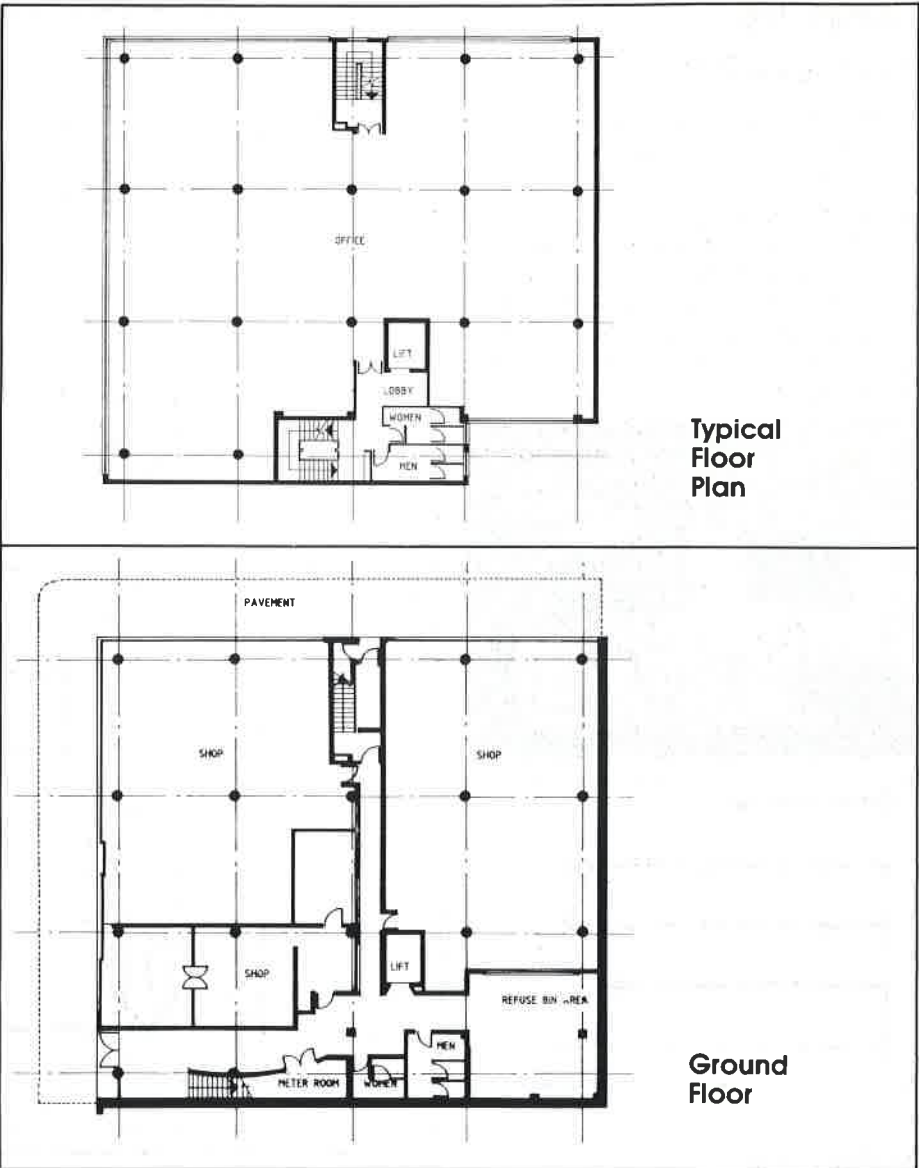
SUBMISSION

Co-operative Facility

Paddock, South Coast.
Architects: Theunissen Jankowitz SA Inc, Margate.

The Coastal Farmers Co-operative required an economical facility to serve, house and market their agricultural merchandise. In their response the architects chose a standard steel portal frame positioned so as to provide maximum vehicular service access and an emphasis on the public entrance and showroom.

• This project was featured in Building, April 1989.



- | | | |
|---------------------|----------------------|-----------------|
| 1. ENTRANCE | 7. CHEMICAL STORE | 13. CHANGE ROOM |
| 2. GARDEN | 8. TEA KITCHEN | 14. TEA KITCHEN |
| 3. MANAGER'S OFFICE | 9. TOILETS MALE | 15. TOILET |
| 4. PAY COUNTER | 10. TOILETS FEMALE | 16. REST ROOM |
| 5. SHOW ROOM | 11. OIL STORE | |
| 6. BULK STORE | 12. CHEMICAL B STORE | |

SUBMISSION

Desmond House and Annex

Marine Drive, Shelley Beach, South Coast.
Architects: Theunissen Jankowitz SA Inc, Margate.

Due to a change in para-statal policy, Eskom required rented accommodation in the Southern Natal region. Designed with expansion in mind, the adjacent vacant property was acquired and the annex developed. That the architects have been commissioned for the design of the new civic centre for the town, can to some measure be ascribed to the success of the Desmond House project.



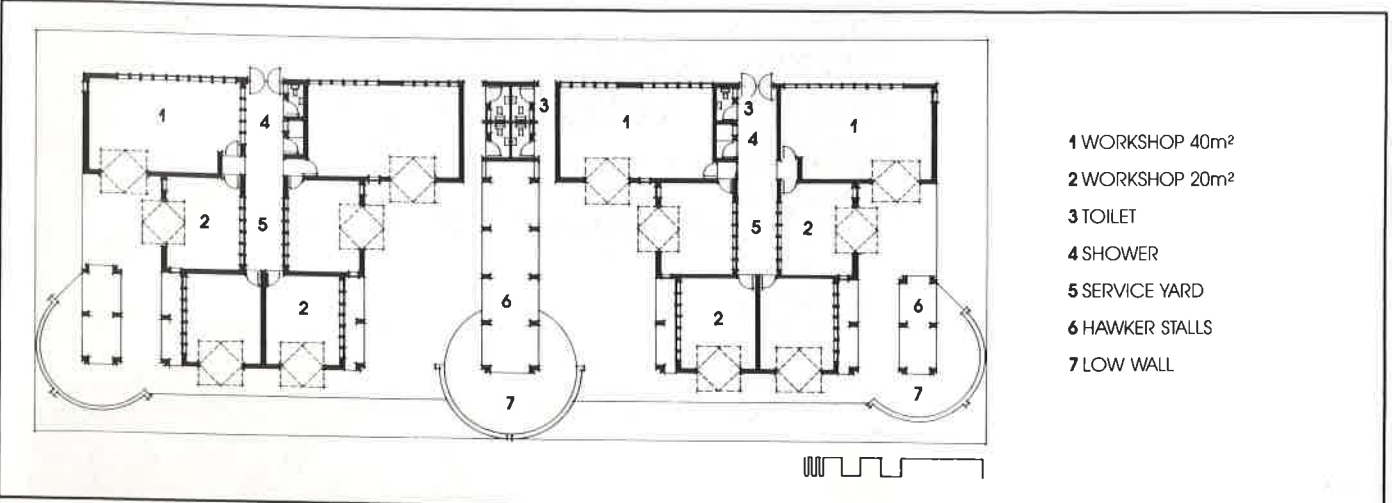
SUBMISSION

Centre for Small Industry

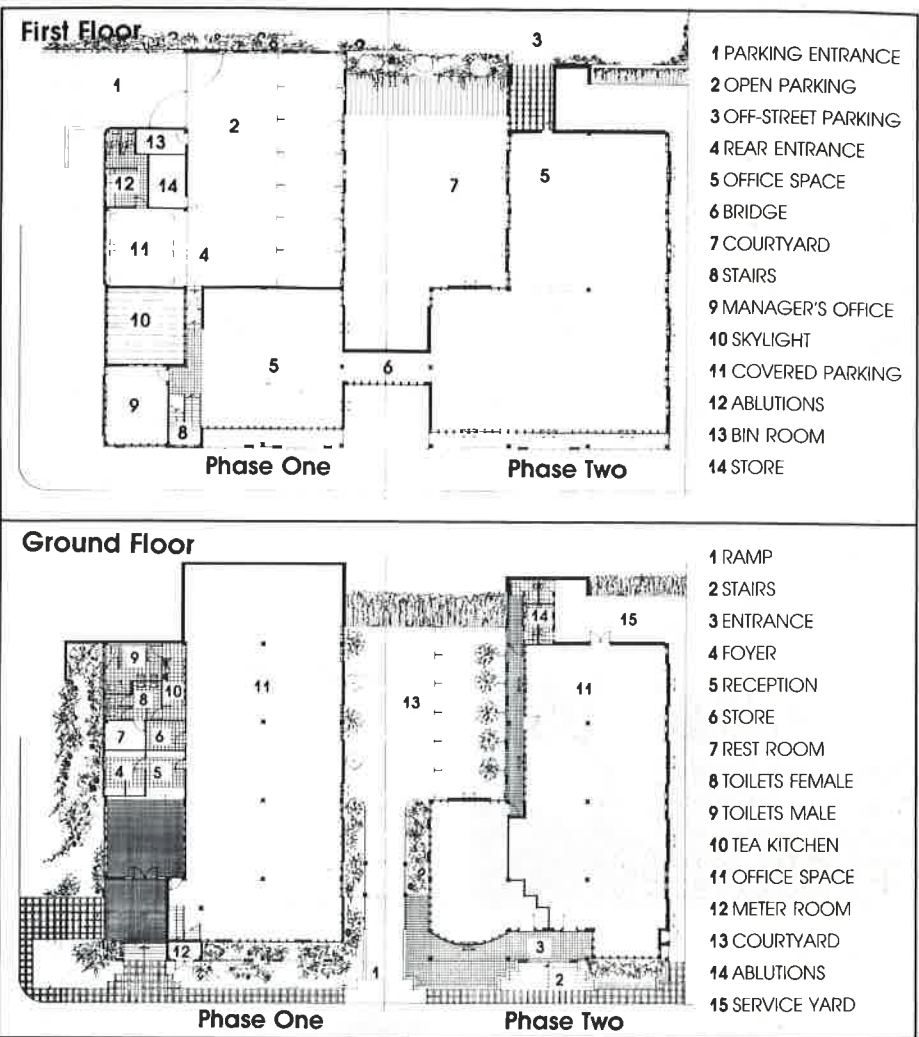
Gamalakhe, South Coast.
Architect: Theunissen Jankowitz SA Inc, Margate.

To design a complex to house 12 mini-industrial units, the architects set out to design a "people place", a place that "evokes interest, encourages curiosity, creates excitement and causes one's return frequently to rekindle its unique atmosphere".

• This project was featured in Building, April 1988.



- | |
|-----------------------------|
| 1 WORKSHOP 40m ² |
| 2 WORKSHOP 20m ² |
| 3 TOILET |
| 4 SHOWER |
| 5 SERVICE YARD |
| 6 HAWKER STALLS |
| 7 LOW WALL |



- | |
|----------------------|
| 1 PARKING ENTRANCE |
| 2 OPEN PARKING |
| 3 OFF-STREET PARKING |
| 4 REAR ENTRANCE |
| 5 OFFICE SPACE |
| 6 BRIDGE |
| 7 COURTYARD |
| 8 STAIRS |
| 9 MANAGER'S OFFICE |
| 10 SKYLIGHT |
| 11 COVERED PARKING |
| 12 ABLUTIONS |
| 13 BIN ROOM |
| 14 STORE |

- | |
|------------------|
| 1 RAMP |
| 2 STAIRS |
| 3 ENTRANCE |
| 4 FOYER |
| 5 RECEPTION |
| 6 STORE |
| 7 REST ROOM |
| 8 TOILETS FEMALE |
| 9 TOILETS MALE |
| 10 TEA KITCHEN |
| 11 OFFICE SPACE |
| 12 METER ROOM |
| 13 COURTYARD |
| 14 ABLUTIONS |
| 15 SERVICE YARD |



SUBMISSION

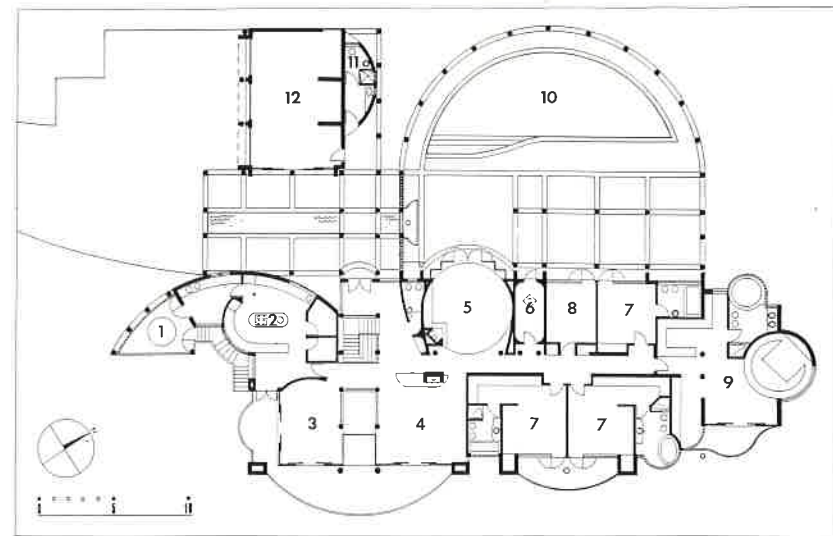
House Reddy

Seaview Road, Kloof.

Architects: Johnson Murray Architects, Durban.

The brief called for a large house adequate for entertaining family members, friends and business associates on a peninsula-shaped piece of land with panoramic views in opposite directions: to the coast and Kloof Gorge.

The architecture draws upon devices such as colonnades, axes, framed symmetries and rusticated banding, while colour is used to give depth and accentuate the forms "in an exciting and youthful manner that reflects the owner's personality".



Ground Level

- | | | |
|------------------|----------------|-----------------|
| 1. DRYING YARD | 5. FAMILY ROOM | 9. EN-SUITE |
| 2. KITCHEN | 6. PRAYER ROOM | 10. POOL |
| 3. DINING ROOM | 7. BEDROOMS | 11. CHANGE ROOM |
| 4. FORMAL LOUNGE | 8. STUDY | 12. GARAGE |

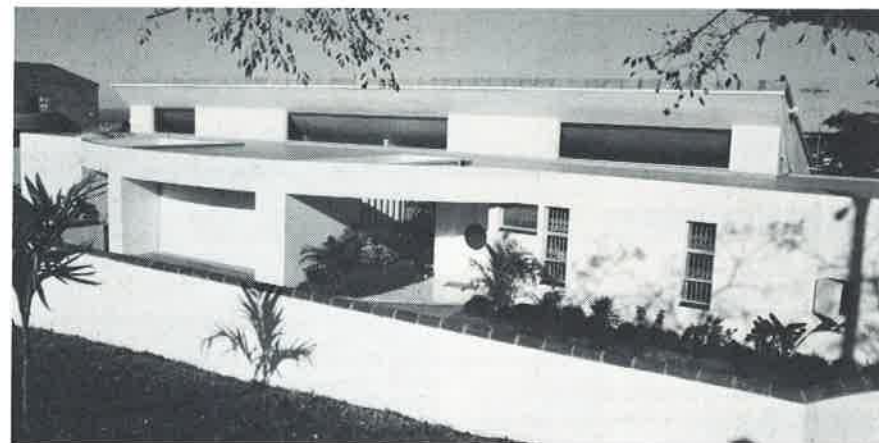
SUBMISSION

House Pather

Shannon Drive, Reservoir Hills, Durban.

Architects: Seedat Architects, Durban.

Situated on a steep site with magnificent sea and city views, the client required a house which served as a place of retreat with a relaxed atmosphere. The principal design objective was to capitalise on the views and to integrate building and site as much as possible to avoid a multi-level building.



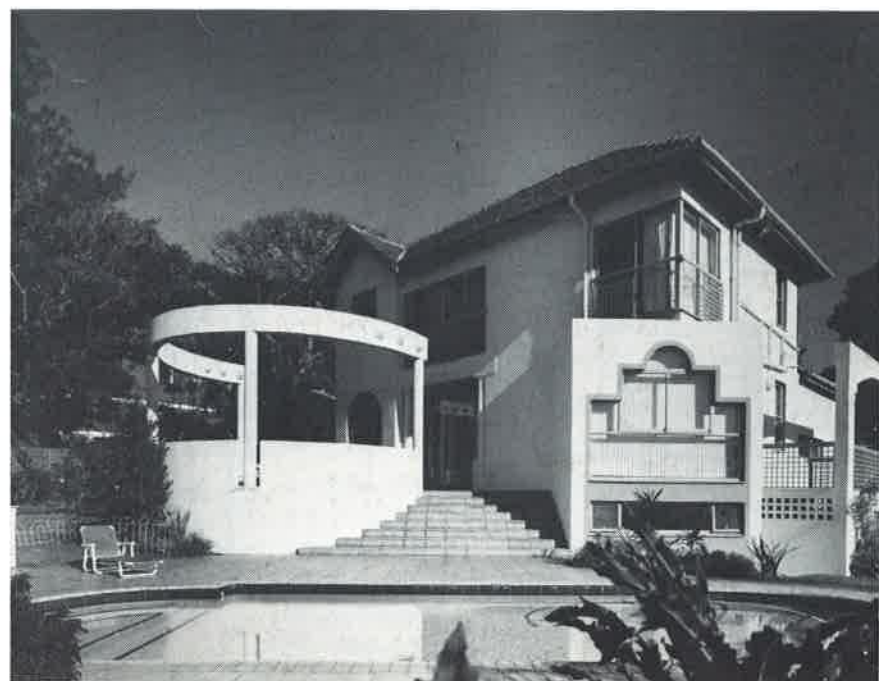
SUBMISSION

House Emanuel

Sir Arthur Road, Morningside, Durban.

Architects: SmithKing, Durban.

In briefing the architects to refurbish the house, the owner sought to maximise the benefits of aspect, the sound existing structure and the generous room sizes and ceiling heights.



NEW DEGREE STRUCTURE AT THE UNIVERSITY OF NATAL

With effect from 1990, there is a new qualification structure in Architecture at the University of Natal. This draws a distinction between a general education in the discipline of architecture on the one hand, and the necessary specialist professional training to register as an architect on the other hand. Replacing the previous six-year degree will be two new qualifications: a four-year Bachelor of Architecture degree and a Post Graduate Diploma in Architecture. The same structure has also been adopted at the Universities of the Witwatersrand and the Orange Free State.

At Natal, the Bachelor of Architecture degree will provide a general education in the discipline of architecture, which will be structured around core studies of Architectural Theory and Design, Building Construction and Architectural History. Graduates who hold this degree will be eligible to enter

employment in architects' offices, and in a range of new employment opportunities in the field of environmental design.

Graduates who achieve appropriate standards in their B.Arch degree can choose to study further at post graduate level. For those graduates who intend to make a professional career of architecture, it is essential to complete the one-year Post-Graduate Diploma in Architecture. This will enable them to become members of the Institute of South African Architects, and to register with the South African Council for Architects after completing a further period of practical experience. Alternatively, graduates may extend their studies in a new professional specialisation (such as Town Planning or Building Economics), in a research degree, or in a new one-year coursework Master's degree in Environmental Design planned for 1991.

PRESTIGE AWARD FOR NATAL STUDENT

Winner of the 1989 *Corobrik Architectural Student of the Year* award was Natal student Patrick Avicé du Buisson. Patrick's winning project was a Yacht Club for Durban which combined the two existing clubs and relocated them on the Yacht Mole. The club building was designed as a sculptural element forming an "island" which in turn offered excellent security to all who use the yachting facilities. The R15 000 award, sponsored by *Corobrik*, is intended to be used for further architectural studies.



PIETERMARITZBURG CIVIC AWARDS

The following members and practices were recently honoured:

Wynand Claassen : for the harmonious entity of Comrades House and curtilage.

Carter-Brown & Baillon : for integrating Stowell Building into the traditional character of the city without resorting to imitation of old styles.

Rougier, Croxon & Swiatek : for Hermen's Service Station which demonstrates that it is possible to integrate a contemporary multinational house-style into the established fabric of the city.

Gordon Small : for enriching Pietermaritzburg with a number of new buildings in harmony with their surroundings.

BURSARIES AT THE NATAL SCHOOL OF ARCHITECTURE

The first bursary under the **O'Brien-Brown Memorial Bequest** was awarded to Mr Minenhle Makhanya in 1989.

In memory of the late Clem Fridjohn, the firm founded by him — **Fridjohn, Fulford & Partners** — is

marking its 50th anniversary this year, by the awarding of a bursary. The recipient is Mr Craig Page-Lee, a fourth-year student.

Recipient of the bursary given by **FGG Architects** is Sokesimbone (SJ) Mkhize, a fourth-year student.

PRACTICE NOTICES

CHANGES IN PARTNERSHIP

R W Straw is now practising under the style of Taljaard, Carter, Ogilvie & Straw. The address remains unchanged.

K Lloyd is now the partner in charge of Theunissen Jankowitz (Durban office) at 12th floor, Federated Life House, Smith Street, Durban.

The practice of Frolich and Golding has been dissolved.

From 1 March 1990, Franklin, Garland, Gibson & Partners are practising under the style of FGG Architects, and C du Toit and W Raats have joined the practice as Associates at that date.

Hesketh Driman & Partners: K A Pearson is the only partner w.e.f. 1 March 1990; R S Driman retired on 28 February 1990 but will remain as a consultant; J H Hesketh remains as a consultant.

P R Howe has registered a practice under the style of Peter Howe Associates at PO Box 542, Hilton.

CHANGES IN ADDRESS

K R Breetzke (Osmond Lange Architects Inc) to 4th floor, Charter House, 13-15 Brand Road, Glenwood, Durban.

A Y Millar to 24 Ferguson Road, Durban.

P H Coetzee (Pieter Coetzee) to 793 Jan Smuts Highway, Sherwood.

M L Taschner to 14 Hillside Road, Cowies Hill.

J M Seirlis (Mrs) to 8 Alexander Place, Kloof.

G B Douglas to c/o Ellens & Whitfield, 202 Salisbury House, Smith Street, Durban.

F M Carrington to 158 Percy Osborne Road, Morningside.

A B Adkin to 25 Musgrave Gardens, 148 Musgrave Road, Durban.

TRANSFERS IN CLASS

J R Yelland — Ordinary to Retired

E V Plekker — Ordinary to Retired

P R Steward — Ordinary to Retired

CHANGES IN MEMBERSHIP

F D Spencer — NPI to TPI

NEW MEMBERS

K R Perry (Ordinary) Flat 11, 371 Musgrave Road, Durban.

R A Hindle (AnT) PO Box 37069, Overport.

N M Jousra (Miss) (AnT) 27 Nordbury, 130 Marriott Road, Durban.

S E Rudolph (Miss) (AnT formerly TPI) PO Box 1768, Durban.

M Napier (AnT) 125 Rif Road, Randrus, Durban.